



LUXE-LINE SINGLE insulated personnel door,
the perfect combination with your overhead door!

Custom-made quality!

In addition to the right overhead door, we can also supply a matching Luxe-Line personnel door that perfectly complements the overhead door.

The Luxe-Line Single and overhead door combination is easily included in the architectural concept.

Our entire range of overhead door panels can be used to fill the aluminium profile framework. This puts individual applications within reach, every Luxe-Line Single is, after all, custom made and if desired is aligned with your overhead door.

The Luxe-Line Single is constructed from thermally separated aluminium profiles. The Luxe-Line Single is easy, but above all, quick to install using specially developed installation profiles, which reduce the installation time considerably. It is possible to install the personnel door inside or behind the structural opening.

The Luxe-Line Single personnel door is only made to specification. The Single door is made from anodised

aluminium profiles in combination with 40 mm sandwich panels. Using the same panels for the Luxe-Line Single as are used for the overhead door creates a perfect whole. Here, the high insulation value is an important advantage, and possibly a decisive factor in your choice.

The maximum dimensions are:	Door leaf W x H
Luxe-Line Single with safety glass:	1250 x 2600 mm
Luxe-Line Single with panels:	1550 x 2600 mm



Perfect alignment

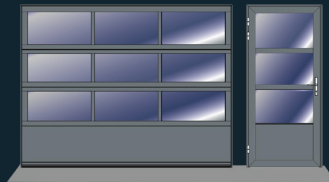
The Luxe-Line Single personnel door offers a suitable and aesthetic solution. The properties of the Luxe-Line Single can be used to create any desired line pattern between the doors.

For example, you are looking for a solution that allows daylight to enter. You can choose to use glazing that is installed and aligned in a similar way in both the overhead door and the Luxe-Line Single.

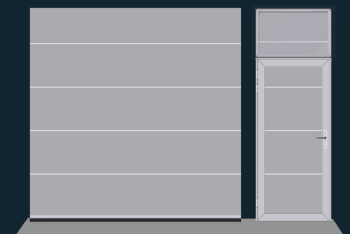
The same amount of illumination can also be achieved, for instance, by constructing an overhead door from S40 panels and one or more A40 sections. The Luxe-Line can seamlessly align to such a door.



Aligned with S40 overhead door with A40 sections



Aligned with A40 overhead door with S40 lower section



Aligned with the S40 overhead door

Variations in colour and filling

When the standard S40 Colour-Line panels are used, you can choose from no less than 20 standard RAL colours.

The standard Luxe-Line frame is made from anodised aluminium profiles. This scratch-resistant anodised frame forms a perfect whole with any filling or colour. If another colour for the frame or filling is desired, this is possible at a small surcharge. (RAL 9016 is also available as a standard colour).

Stucco	1021	3000	5010	6009
7016	8014	9002	9006	
9007	9010	1015	3003	3004
1015	3003	3004	5003	6005
7021	7022	7035	9001	9005

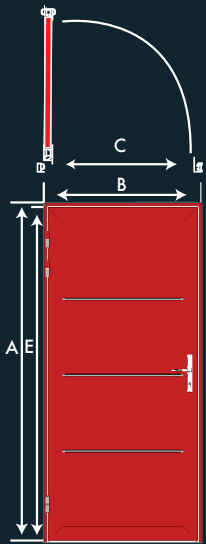


Anodised frame with Colour-Line filling



Technical data

Below is a summary of various technical details and options that can help you make the right choice. The Luxe-Line Single meets all of the specified technical CE standards.

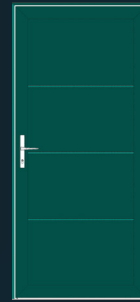


Dimensions Luxe-Line Single

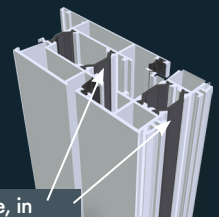
Height of leaf	Width of leaf	
	Double safety glass	Other fillings
A → 2000 mm	B max = 1150 mm	B max = 1350 mm
A → 2300 mm	B max = 1250 mm	B max = 1350 mm
A → 2600 mm	B max = 1250 mm	B max = 1550 mm
C = Clearance width minus 160 mm		
E = Clearance height minus 56 mm		



Insulation value Luxe-Line Single



Luxe-Line Single from 900 x 2300 mm
 Double safety glass 2.96 W/m²k
 Panel filling 1.28 W/m²k

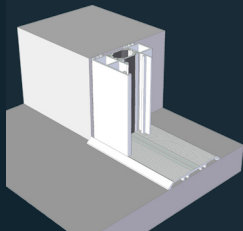


High insulation value, in part thanks to the thermally separated Luxe-Line Single aluminium profiles.

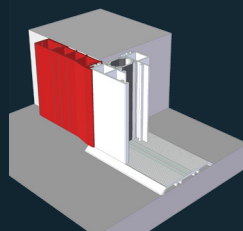


Using windows or safety glass, you create a door that has no boundaries to its use.

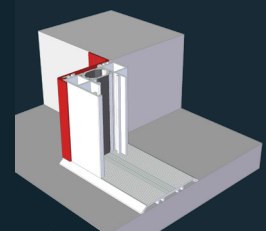
Technical drawings of the three installation options. Can always be suitably and quickly installed.



A: Installation using a doorframe



B: Installation in the structural opening



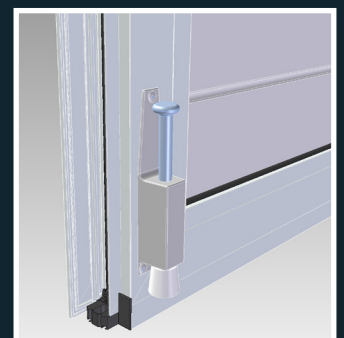
C: Installation in the structural opening

Choose the level of security that best suits your situation

	Standard	Panic	Electrical	3-point lock
Euro	✓	✓	✓	✓
KALSA	✓	✓	✓	
KESO	✓	✓	✓	
ASSA	✓			



All doors are fitted with adjustable hinges to allow your door to be perfectly adjusted.



A doorstop, which can be used to hold your door open in any position, is available as an optional extra.